


NOTES:

1. ALL DIMENSIONS ARE SUBJECTED TO MANUFACTURING TOLERANCE $\pm 5\%$, UNLESS OTHERWISE STATED.

									SIGN / NAME	GENERAL ARRANGEMENT FOR 1 WAY SF6 11KV EXETENSIBLE OUTDOOR RMU (TYPE:VCE)	
								DRN	ASV		
								CHD	ASV		
								SCALE: NTS	APPD	RVS	
NO	REVISION	SIGN	DATE	NO	REVISION	SIGN	DATE	FIRST ANGLE PROJECTION	DATE: 06.09.17	DRG NO. GA_OSF0075_03	ISS. NO. 1

SINGLE LINE DIAGRAM FOR 1 WAY SF6 11KV EXTENSIBLE RMU

11KV, 630A, 21kA FOR 3SECS, 50HZ SF6 11KV EXTENSIBLE RMU, TYPE: VCE

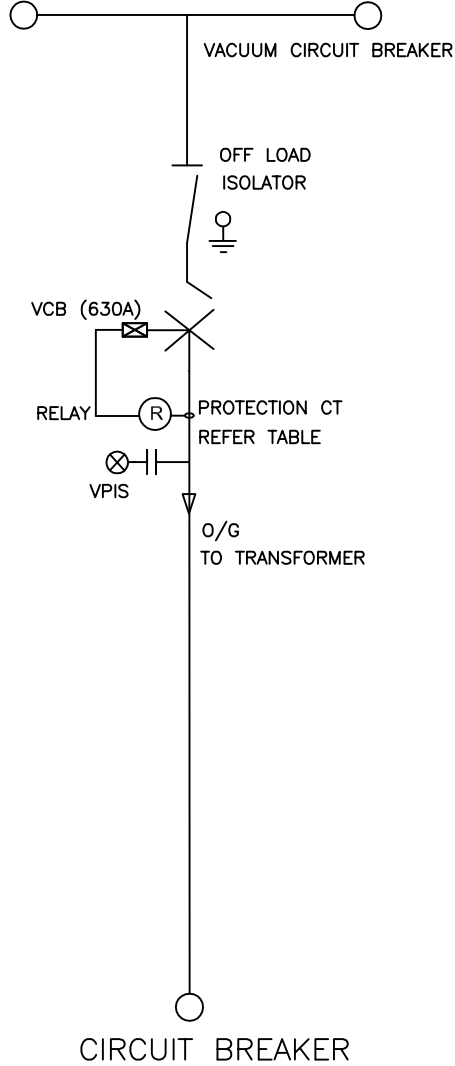


TABLE : PROTECTION CT RATIO

SR.	DESCRIPTION
1.	50-100/1A


									SIGN / NAME	SINGLE LINE DIAGRAM FOR 1 WAY SF6 11KV EXETENSIBLE OUTDOOR RMU (TYPE:VCE)	
								DRN	ASV		
								CHD	ASV		
								SCALE: NTS	APPD	RVS	
NO	REVISION	SIGN	DATE	NO	REVISION	SIGN	DATE	THIRD ANGLE PROJECTION	DATE: 06.09.17	DRG. NO. GA_OSF0075_04	ISS. NO. 1

W.O. NO: OSF0075

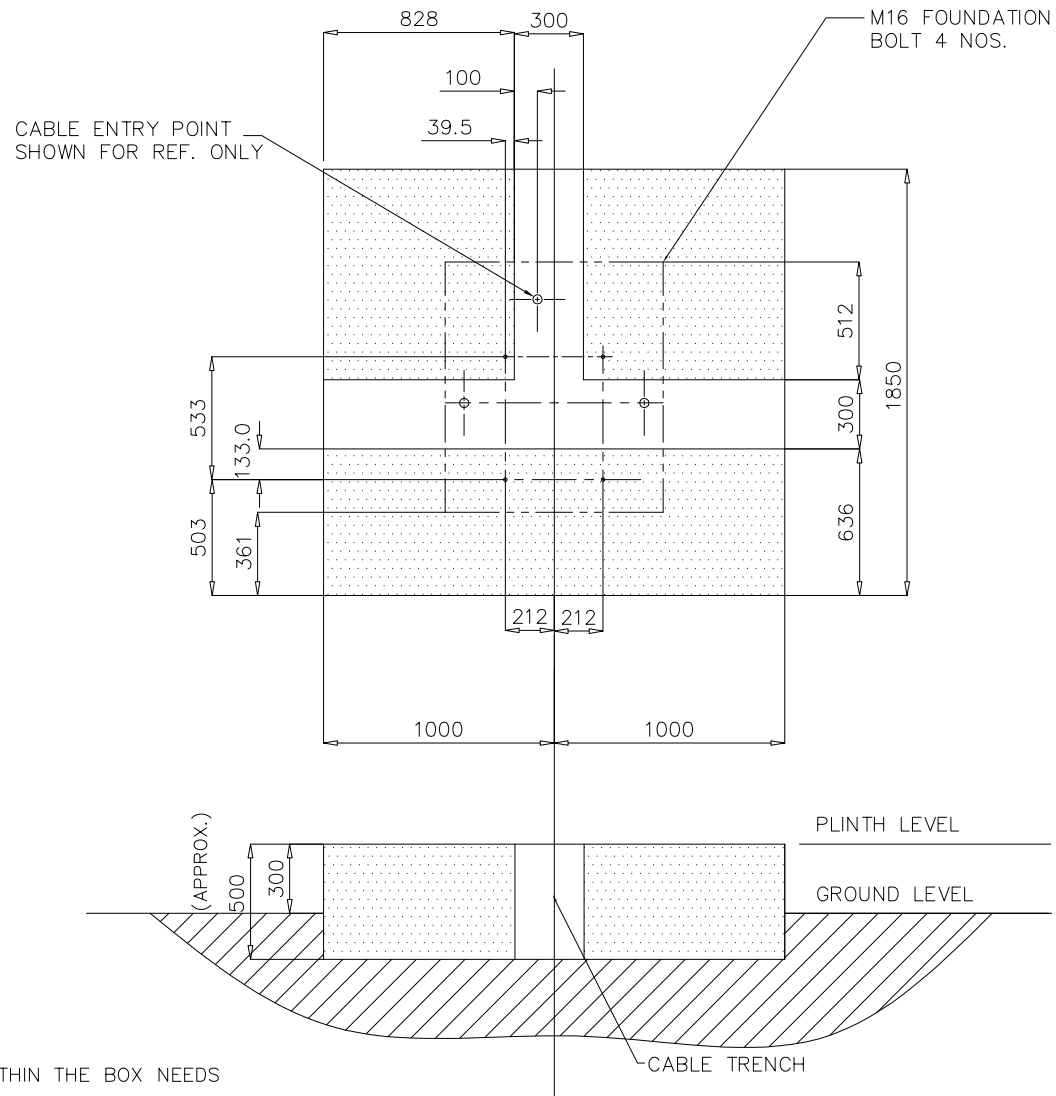
BILL OF MATERIAL FOR 1 WAY SF6 11KV EXTENSIBLE RMU

IF IN DOUBT ASK

SR.	DESCRIPTION	QTY.	UNIT	MAKE	DETAILS
1	CIRCUIT BREAKER	1	NO	LUCY ELECTRIC	12KV ,630A ,21KA FOR 3 SECS
2	VACCUM INTRRUPTER (1X3)	1	SET	SHAANXI/CHENGDU/EQL	12KV ,630A ,21KA FOR 3 SECS
3	SELECTOR SWITCH/DISCONNECTOR/OFF LOAD ISOLATOR	1	NO	LUCY ELECTRIC	12KV ,630A ,21KA FOR 3 SECS
4	T-OFF BUSHING (1X3)	1	SET	LUCY ELECTRIC	SUITABLE FOR 11KV SYSTEM
5	T-OFF CABLE BOX WITH SPLIT TYPE GLAND PLATE	1	NO	LUCY ELECTRIC	STD
6	END CAP COVER	1	NO	LUCY ELECTRIC	STD
7	OPERATING HANDLE	1	NO	LUCY ELECTRIC	REF NO.5610480007
8	SELF POWERED OVERCURRENT & EARTH FAULT RELAY	1	NO	ASHIDA/	ADR241S/C
9	PROTECTION CT- 50-100/1A (1X3) FOR 10 NOS. RMU	1	SET/RMU	CGL/G&M/NARAYAN POWERTECH/EQL	CLASS 10P5-5P10, 2.5VA BURDEN
10	RIGHT ANGLED BOOTS (1 SET CONTAINS 3 BOOTS)	1	SET	K.D JOSHI/EQL	SUITABLE FOR 11KV SYSTEM
11	CAPACTIVE VOLTAGE INDICATORS (VPIS)	1	NO	LUCY ELECTRIC	SUITABLE FOR 11KV SYSTEM
12	SF6 GAS PRESSURE GAUGE MANOMETER	1	NO	WIKI/EQL	MIN PRESS:- 0.05 BAR

									SIGN / NAME	BILL OF MATERIAL FOR 1 WAY SF6 EXETENSIBLE OUTDOOR RMU (TYPE:VCE)	
								DRN	ASV		
								CHD	ASV		
NO	REVISION	SIGN	DATE	NO	REVISION	SIGN	DATE	THIRD ANGLE PROJECTION	DATE: 06.09.17	DRG. NO. GA_OSF0075_05	ISS. NO. 2


IF IN DOUBT ASK



NOTE:

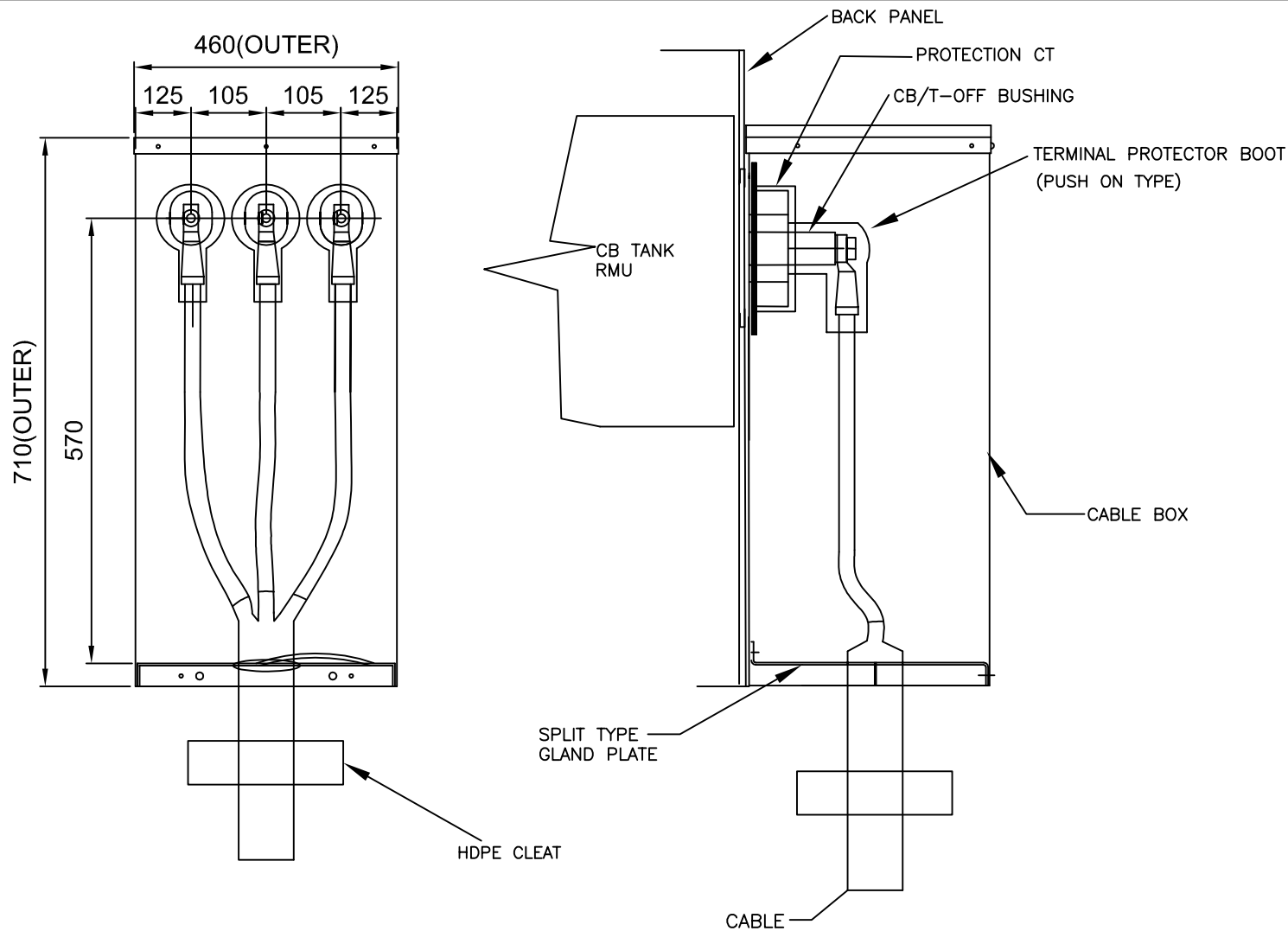
1. THE DIMENSIONS OF ELEMENTS WITHIN THE BOX NEEDS TO BE MAINTAINED.
OTHER EXTERNAL DIMENSIONS CAN BE TRIMMED OFF DEPENDING ON SEPECIFIC REQUIREMENTS OF SITE.
2. THIS DRAWING IS FOR REFERENCE PURPOSE ONLY.

LAYOUT FOR THE FOUNDATION

									SIGN / NAME	GENERAL ARRANGMENT FOR 1 WAY SF6 11KV EXTENSIBLE OUTDOOR RMU (TYPE: VCE)	
								DRN	ASV		
								CHD	ASV		
								SCALE: NTS	APPD	RVS	
NO	REVISION	SIGN	DATE	NO	REVISION	SIGN	DATE	THIRD ANGLE PROJECTION	DATE: 06.09.17	DRG. NO. GA_OSF0075_06	ISS. NO. 1


W.O. NO: OSF0075

IF IN DOUBT ASK



NOTES :

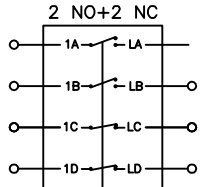
1. ALL DIMENSIONS ARE SUBJECTED TO MANUFACTURING TOLERANCE OF $\pm 5\%$, UNLESS OTHERWISE STATED.
2. CABLE BOX BACK PLATE THICKNESS 2.5 MM & COVER IS 1.6MM.
3. DEGREE OF PROTECTION IS IP54.

								SIGN / NAME	TYPICAL ARRANGEMENT FOR CIRCUIT BREAKER		
								DRN ASV			
								CHD ASV			
							ALL DIMN'S ARE IN mm	APPD RVS			
							SCALE: NTS				
NO	REVISION	SIGN	DATE	NO	REVISION	SIGN	DATE	THIRD ANGLE PROJECTION	DATE: 06.09.17	DRG.NO.: GA_OSF0075_07	ISS. NO. 2

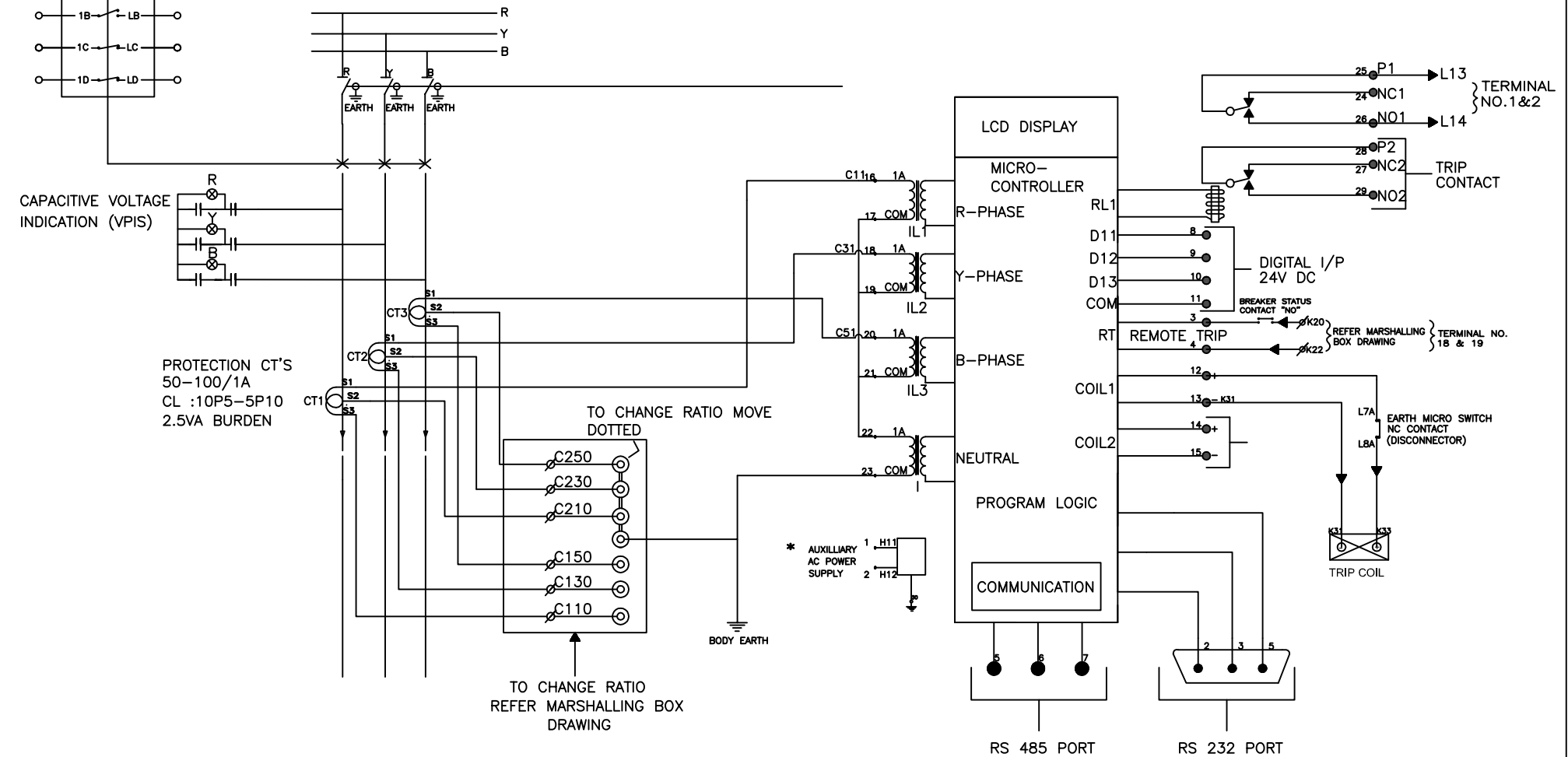
W.O. NO: OSF0075

IF IN DOUBT ASK

BREAKER AUX SW CONTACTS

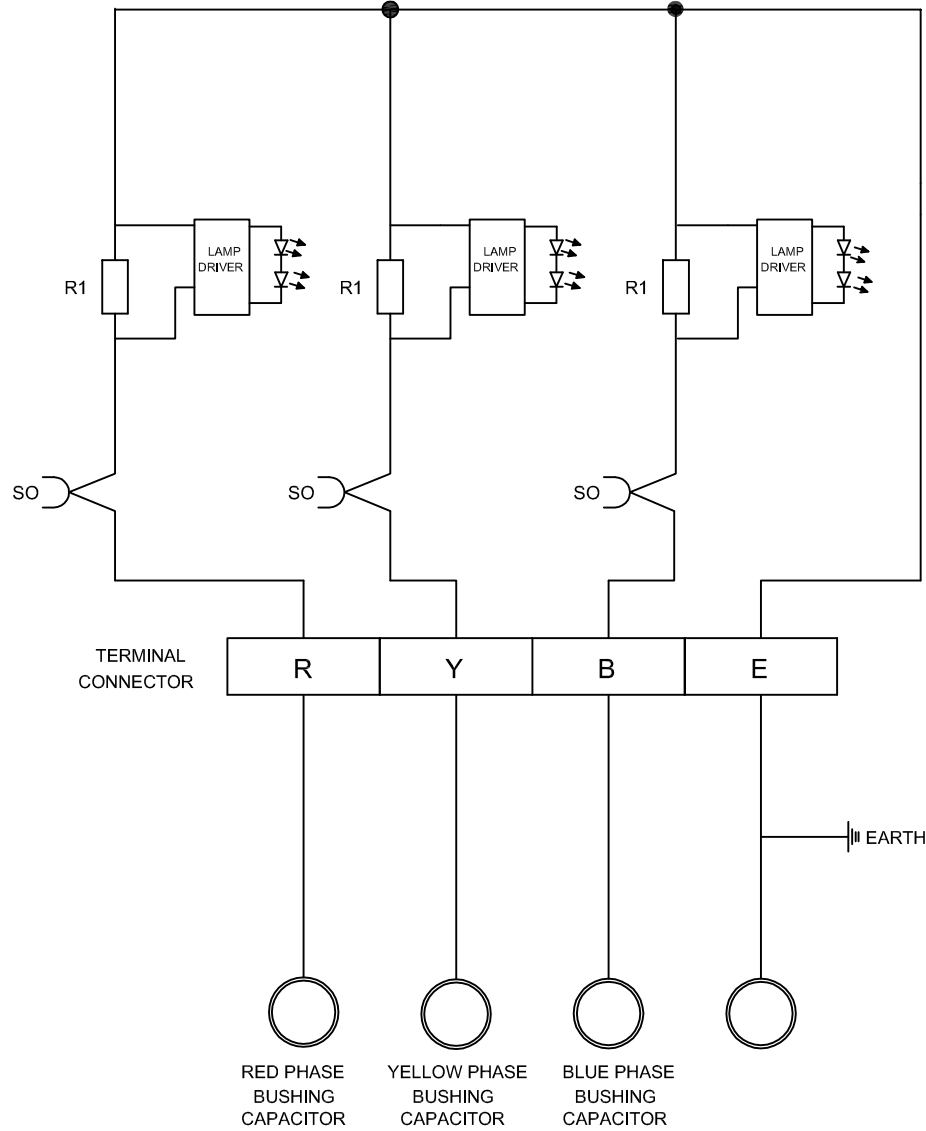



CONTROL SCHEMATIC FOR CIRCUIT BREAKER (630A)

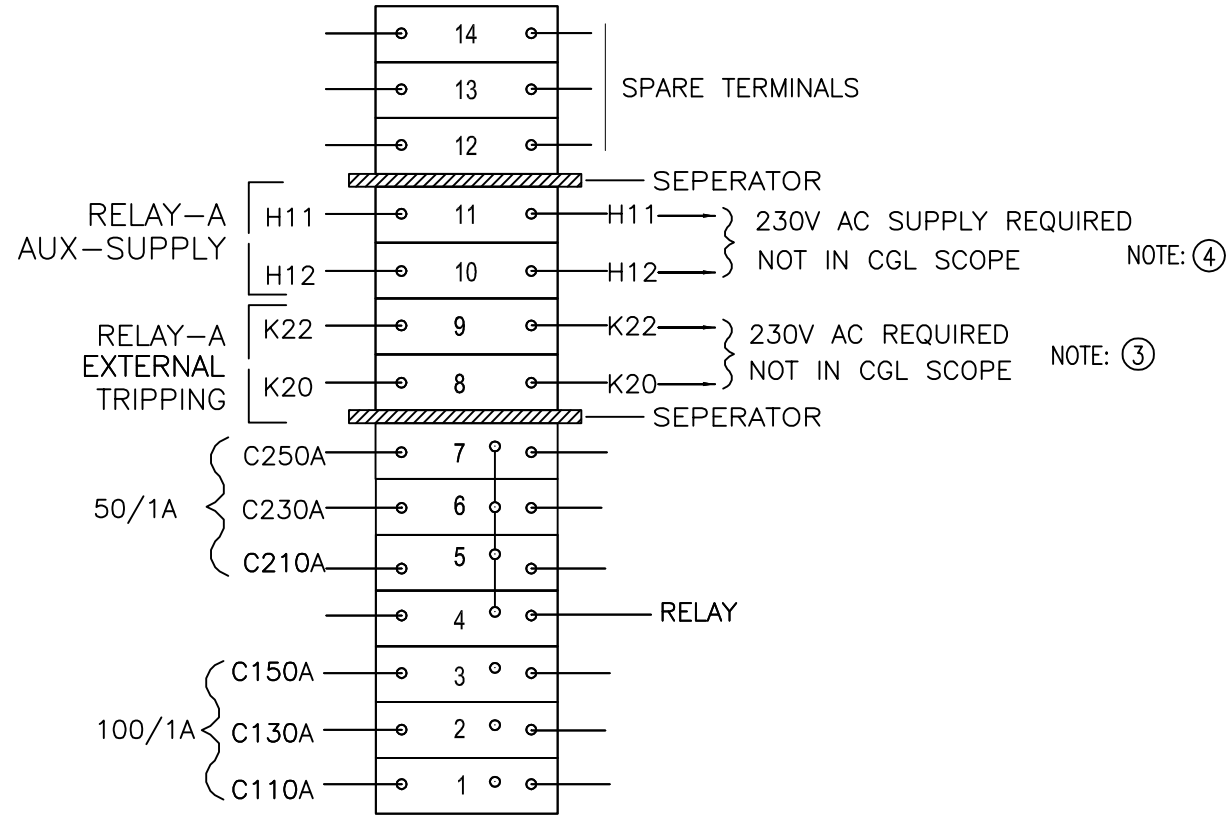


* AUXILIARY SUPPLY 230V AC REQUIRED WHEN IN BUILT BATTERY SUPPLY IS NOT AVAILABLE FOR DISPLAY.

								SIGN / NAME		TYPICAL WIRING DIAGRAM FOR CGL RELAY TYPE:-CGI 14S	
								DRN	ASV		
								CHD	ASV		
								APPD	RVS		
NO	REVISION	SIGN	DATE	NO	REVISION	SIGN	DATE	THIRD ANGLE PROJECTION	DATE: 06.09.17	DRG.NO.: GA_OSF0075_08	ISS. NO. 2




									SIGN / NAME	CONTROL SCHEMATIC FOR VPIS	
								DRN	ASV		
								CHD	ASV		
								APPD	RVS		
NO	REVISION	SIGN	DATE	NO	REVISION	SIGN	DATE	THIRD ANGLE PROJECTION	DATE: 06.09.17	DRG. NO. GA_OSF0075_09	ISS. NO. 01



NOTES: FOR CT RATIO: 50-100/1A (REF. TB)

- 1) PRESENTLY CT CONNECTED TO RATIO - 50/1A (FOR THIS SHORTING LINK AT 4,5,6,7)
- 2) TO SELECT CT RATIO - 100/1A (FOR THIS CONNECT SHORTING LINK AT 1,2,3,4)
- 3) ADDITIONAL FEATURE : REMOTE TRIPPING IS POSSIBLE BY PROVIDING 230V AC POWER SUPPLY TO TERMINAL K20 & K22
- 4) OPTIONAL FEATURE : AUXILIARY SUPPLY 230V AC REQUIRED WHEN INBUILT BATTERY SUPPLY IS NOT AVAILABLE FOR DISPLAY.

									SIGN / NAME	MARSHALLING BOX WIRING DIAGRAM FOR RMU (TYPE : VCE)	
								DRN	ASV		
								CHD	ASV		
								SCALE: NTS	APPD	RVS	
NO	REVISION	SIGN	DATE	NO	REVISION	SIGN	DATE	THIRD ANGLE PROJECTION	DATE: 06.09.17	DRG.NO.: GA_OSF0075_10	ISS. NO. 1

W.O. NO: OSF0075

IF IN DOUBT ASK

NOTES:


1. BORDER OF RATING PLATE SHOULD BE 2mm.
2. LETTER HEIGHT SHOULD BE 3mm.
3. BACKGROUND SHOULD BE BLACK.
4. RIVETTED TYPE NAME PLATE
5. PROCESS : ETCHING

MATERIAL : 1.6MM THK (ANODISED AL.)

FINISH : NATURAL

QUANTITY : 1/JOB.

LUCY ELECTRIC INDIA PVT.LTD.		
(FORMERLY LUCY ELECTRIC INDIA LTD. & CG LUCY SWITCHGEAR LTD.)		
○ H-21, MIDC AMBAD, NASIK. ○		
TYPE REFERENCE	SABRE-VCE	
SERIAL NO.	_____	
YEAR OF MANUFACTURE	_____	
WEIGHT	kg	380
RATED VOLTAGE	kV	12
FREQUENCY	Hz	50
IMPULSE WITHSTAND VOLTAGE	kVp	75
NORMAL CURRENT	A	630
SHORT CIRCUIT PEAK MAKING CURRENT	kAp	52.5
SHORT CIRCUIT BREAKING CURRENT	kA	21
3 SECOND SHORT TIME CURRENT	kA	21
EARTH SWITCH PEAK MAKING CURRENT	kAp	52.5
TESTING STANDARDS	IEC 62271 EATS 41-36	
DEGREE OF PROTECTION	IP54	
FILLING PRESSURE AT 20° C	0.4 bar g	
MINIMUM OPERATING PRESSURE	0.05 bar g	
○ _____ ○		

										SIGN / NAME	RATING PLATE FOR RMU	
										DRN ASV		
										CHD ASV		
										APPD RVS		
NO	REVISION	SIGN	DATE	NO	REVISION	SIGN	DATE	THIRD ANGLE PROJECTION	DATE: 06.09.17	DRG. NO. GA_OSF0075_11	ISS. NO. 1	

GUARANTEED TECHNICAL PARTICULARS

Description	As furnished by Bidder
RMU Category	1Way (1 Circuit Breaker), Type: VCE
RMU application	1Way (1 Circuit Breaker), Type: VCE
Dielectric medium	SF6
Interrupting medium	Vacuum
System Frequency	50 Hz
Rated Voltage	12 KV
Service Voltage	11 KV
Rated Current	630 A
Rated Short time current	21 KA for 3sec
Making capacity	52.5KA
Rated load interrupting line current	630 A
No. of operations at rated short circuit current	5 Close
Opening time of breaker (max.)	Less than 2.5 cycle
Closing time of breaker (max.)	Less than 3 cycle
Breaker Duty Cycle	0 – 3min – CO – 3min – CO
Mechanical endurance	2000 Operations

Temp rise above ambient	As per IEC 60694
Min Gas pressure	0.05 Bar G
Degree of protection	IP 67 for the tank and IP2X for the front cover/mimic board and IP54 (Main Door Closed) & IP2X (Main Door Open) for Outdoor RMUs.
Internal Arc test	21kA for 1 Sec
Lightning Impulse withstand Voltage	75 KVp
Power Frequency withstand voltage	28 KV rms
SF6 Tank design	Hermetically sealed robotically welded stainless steel enclosure with degree of protection IP67.
Earth bus bars Material & size	Copper earth bus bar of size 105sqmm (35 x3mm) or GI Strip earth bus bar of 75x12mm inside the enclosure .Two Numbers body earthing studs of 12 x70mm will be provided
Make of Relay	Ashida/C&S/Reputed Make
Cable clamps	Nylon type
Cable termination	Heat shrinkable
Size	11 kV 3CX300 sq.mm
Operating handle	One per RMU
Bus bar Material	Copper